

# Wolverine Size Chart



## Wolverine - Men's Footwear

USA	UK	EUR	JPN (cm)
3	2	36	21
3.5	2.5	36.5	21.5
4	3	37	22
4.5	3.5	37.5	22.5
5	4	38	23
5.5	4.5	38.5	23.5
6	5	39	24
6.5	5.5	39.5	24.5
7	6	40	25
7.5	6.5	40.5	25.5
8	7	41	26
8.5	7.5	41.5	26.5
9	8	42	27
9.5	8.5	42.5	27.5
10	9	43	28
10.5	9.5	43.5	28.5
11	10	44	29
11.5	10.5	44.5	29.5
12	11	45	30
13	12	46	31
14	13	47	32
15	14	48	33
16	15	49	34

## Wolverine – Men's Socks

Region	Medium	Large	X-Large
US	5 – 9	9 – 12	12 - 15

## Wolverine - Men's Clothing

Size	Neck	Chest	Sleeve	Waist
Medium	15-15.5 in	38-40 in	33-34 in	32-34 in
Large	16-16.5 in	42-44 in	34-35 in	36-38 in
X-Large	17-17.5 in	46-48 in	35-36 in	40-42 in
2XL	18-18.5 in	50-52 in	36-37 in	44-46 in
3XL	19-19.5 in	54-56 in	37-38 in	48-50 in
4XL	20-20.5 in	58-60 in	38-39 in	52-54 in
LT	16-16.5 in	42-44 in	35.5-36.5 in	36-38 in
XLT	17-17.5 in	46-48 in	36.5-37 in	40-42 in
XXLT	18-18.5 in	50-52 in	37.5-38 in	44-46 in

# Wolverine Size Chart



## Wolverine - Women's Footwear

USA	UK	EUR	JPN (cm)
2		32	19
3	1	33	20
4	2	34	21
4.5	2.5	34.5	21.5
5	3	35	22
5.5	3.5	36	22.5
6	4	37	23
6.5	4.5	37.5	23.5
7	5	38	24
7.5	5.5	38.5	24.5
8	6	39	25
8.5	6.5	39.5	25.5
9	7	40	26
9.5	7.5	41	26.5
10	9	42	27
11	9	43	28
12	10	44	29

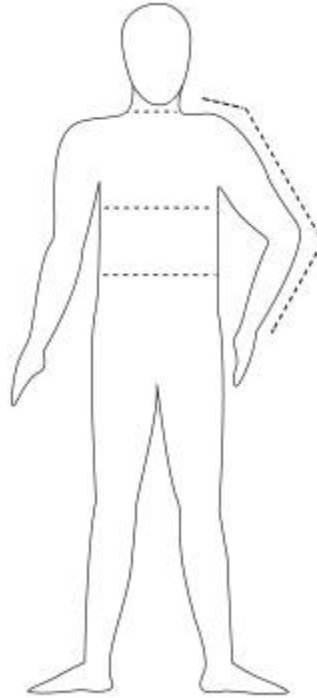
## Wolverine - Unisex Footwear Size Conversion

USA - Men's	USA - Women's	UK	EUR	JPN (cm)
3	5	2	36	21
3.5	5.5	2.5	36.5	21.5
4	6	3	37	22
4.5	6.5	3.5	37.5	22.5
5	7	4	38	23
5.5	7.5	4.5	38.5	23.5
6	8	5	39	24
6.5	8.5	5.5	39.5	24.5
7	9	6	40	25
7.5	9.5	6.5	40.5	25.5
8	10	7	41	26
8.5	10.5	7.5	41.5	26.5
9	11	8	42	27
9.5	11.5	8.5	42.5	27.5
10	12	9	43	28
10.5	12.5	9.5	43.5	28.5
11	13	10	44	29
11.5	13.5	10.5	44.5	29.5
12	14	11	45	30
13	15	12	46	31

# Wolverine Size Chart



How to measure:



## Bust/Chest:

- With arms relaxed at sides, measure around the fullest part of the chest/bust.

## Waist:

- Measure around the natural waistline, smallest part of waist.

## Sleeve:

- With arm slightly bent, start from the center back of neck and measure across the shoulder down to the elbow, continuing down to the wrist.

## Neck:

- Measure around the base/thickest part of the neck.